

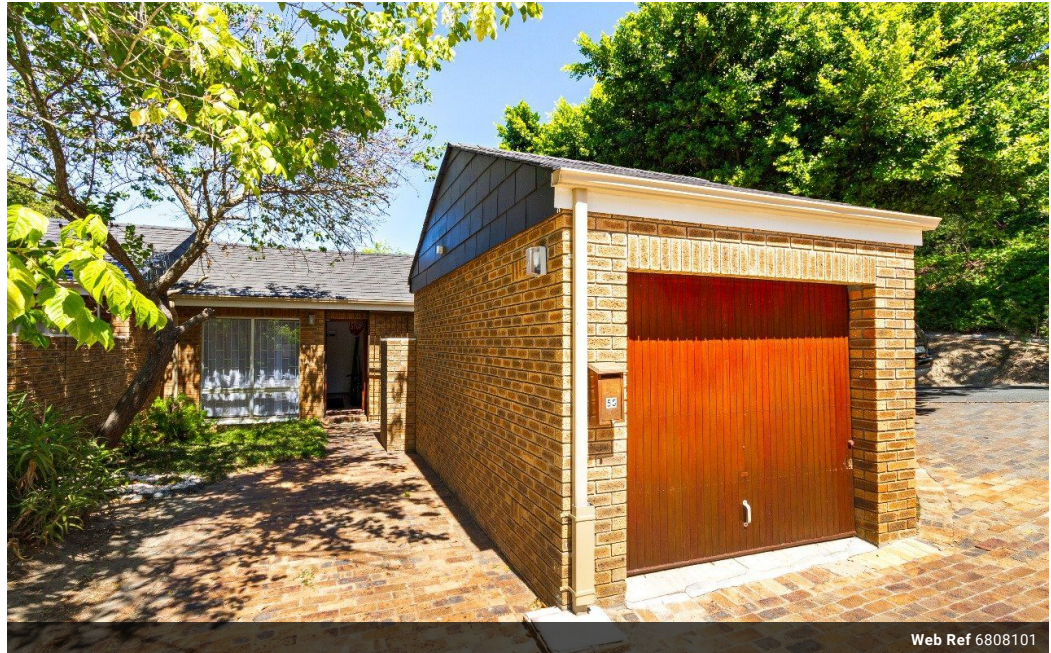


Samantha Van Der Merwe
0636885979
samanthavdm@realgroup.co.za

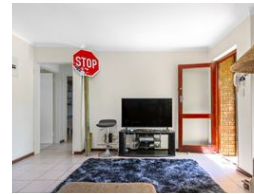
Contact Somerset West

021 5571428

mmmmmmmm



Web Ref 6808101



R15,000 pm

Monthly Levy R2,600 Monthly Rates R500 Lease Period None
Availability Immediately Deposit - Annual Escalation -

 2  1  1

Perfect Student Accomadation

Available 1st December 2024: This charming Facebrick two bedroom townhouse is ideal for students or the young professionals. The property features 2 bedrooms sharing one bathroom with a shower, toilet and basin. Open-plan lounge & dining room leading to a functional kitchen. Single Garage plus extra parking also offering a small garden and a cosy patio to entertain.

Situated in a beautifully landscaped complex residents enjoy the lush gardens and a communal swimming pool. The complex also offers 24-hour security, ensuring peace of mind and offering a safe peaceful living environment. Conveniently located just a 5-minute walk from the engineering building and easy access to shops and restaurants. No Pets Allowed
To Secure this property: One Month Rent + Double deposit + Sign up Fee R1092.50 = R47,592.50

Features

Interior		Exterior		Sizes	
Bedrooms	2	Garages	1	Floor Size	66m ²
Bathrooms	1	Carports / Parkings	1	Land Size	46,632m ²
Kitchens	1	Security	Yes		
Recep. Rooms	1	Pool	Yes		