



Olivia Jacobs
0720880241
olivia@realgroup.co.za



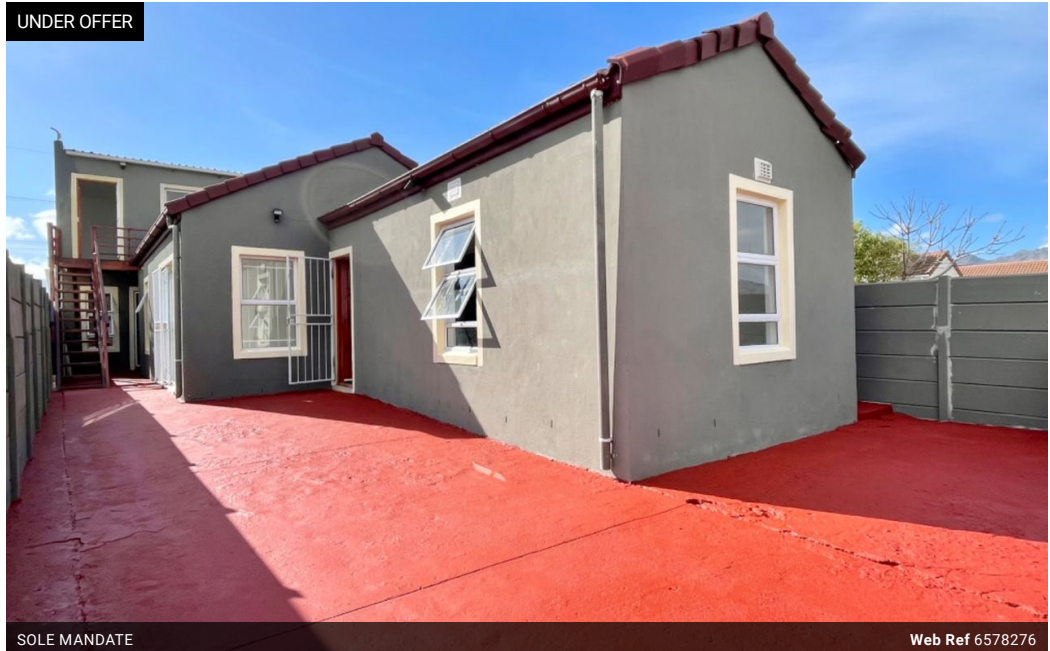
Declan Cone
0605193511
declan@realgroup.co.za

Contact Somerset West

021 5571428

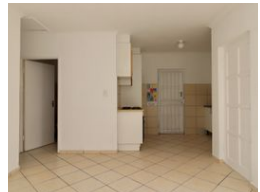
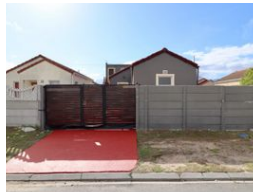
mmmmmmmm

UNDER OFFER



SOLE MANDATE

Web Ref 6578276



R1,300,000

 6  5

Monthly Bond Repayment R13,418.45
Calculated over 20 years at 11% with no deposit.

Transfer Costs R37,617.00 **Bond Costs** R27,105.00

These calculations are only a guide. Please ask your conveyancer for exact calculations.

Monthly Levy R399 **Monthly Rates** R600

Calling first time home buyers and Investors

Exclusive Sole Mandate: This property offers endless opportunities with option of having rental income producing flatlets. The property consist of four flatlets and a two bedroom main house. Each flatlet has open plan living to kitchenette with shower, toilet and basin and own entrance. All flatlets have pay as you go electricity and water. The main house offers open plan lounge to kitchen with electric hob and under counter oven. Two bedrooms sharing a bathroom. Secure parking for two cars.

Broadlands village offers 24 hour manned patrols in the area. Broadlands Village also offers common ground area for the kids to run free. Broadlands village is in close proximity to Shopping centres , Restaurants, High and Primary schools and the famous Strand beach. Total Transfer and bond registration costs +/- R82 907 Bond repayments...

Features

Pets Allowed Yes

Interior

Bedrooms	6
Bathrooms	5
Kitchens	1
Recep. Rooms	1

Exterior

Carports / Parkings	2
Security	Yes
Pool	No

Sizes

Floor Size	157m ²
Land Size	202m ²