

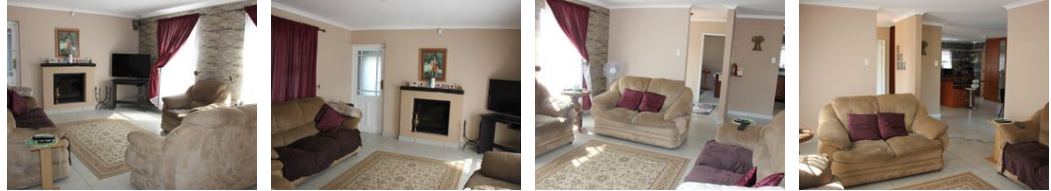


Mandy Murray
0722333132
mandym@realgroup.co.za

Contact Northern Suburbs
021 5571428



Web Ref 6727815



R3,975,000

 4  4.5  2

Monthly Bond Repayment R41,029.49
Calculated over 20 years at 11% with no deposit.

Transfer Costs R278,300.00 **Bond Costs** R51,610.00
These calculations are only a guide. Please ask your conveyancer for exact calculations.

Monthly Rates R1,857

Sought after location in Milnerton Ridge

Spacious family home with rental income generating flatlet

Lovely designed family home with sunny lounge fitted with a fireplace leading to open plan dining room and fully fitted kitchen with a double oven, gas hob, prep bowl, plenty of BICs and separate scullery with two plumbing points. There is a second spacious lounge leading out to pool area which could also be an entertainment room. Another added extra is a separate office/utility room as you enter the home. All four bedrooms are well sized all with BICs, two are fitted with ensuites. The main bathroom has a shower. The main bedroom is very spacious with a large ensuite fitted with a double shower, bath, toilet and built in cupboards. Leading out from the dining room is an undercover built in braai, pool and garden area, as well as an outdoor toilet. Upstairs is...

Features

Interior		Exterior		Sizes	
Bedrooms	4	Garages	2	Floor Size	371m ²
Bathrooms	4.5	Carports / Parkings	2	Land Size	770m ²
Kitchens	1	Security	Yes		
Recep. Rooms	3	Pool	Yes		
Studies	1				