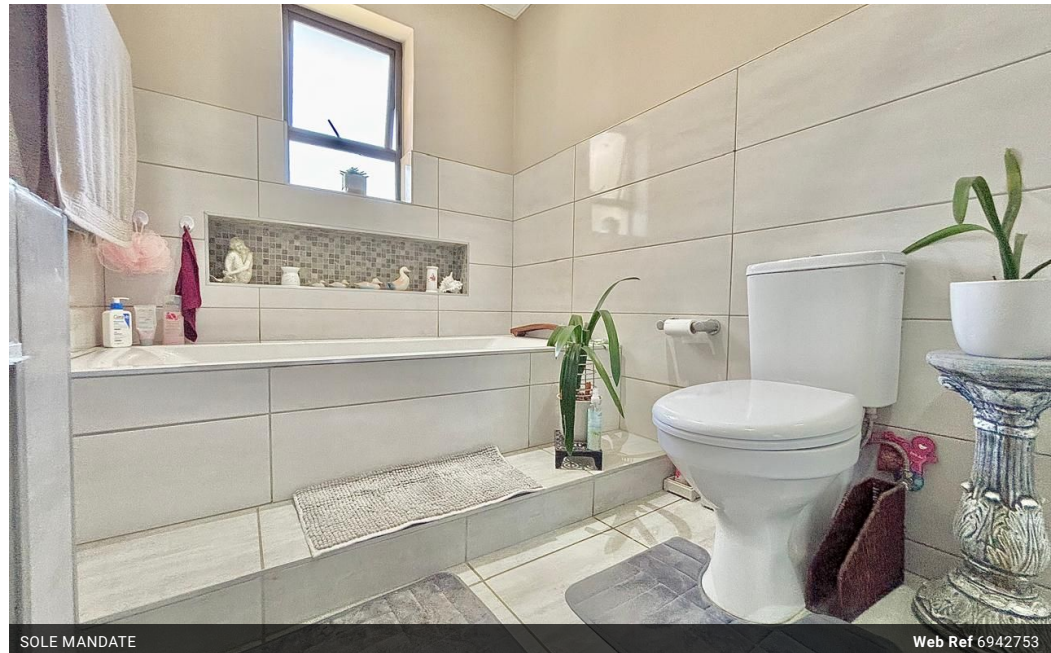




**Matthew Norman**  
723993668  
matthew@realgroup.co.za

Contact Northern Suburbs  
021 5571428



SOLE MANDATE

Web Ref 6942753



**R2,895,000**

**Monthly Bond Repayment** R29,881.85  
Calculated over 20 years at 11% with no deposit.

**Transfer Costs** R151,655.00    **Bond Costs** R42,185.00  
These calculations are only a guide. Please ask your conveyancer for exact calculations.

**Monthly Rates** R800

 4     2     2

### Family home PLUS a large 1 bedroom flat in Bothasig

Family home in Bothasig with the extra well sized fully functional modern 1 bedroom flat for the grandparents to enjoy their own space, but also to be close to the family. This property is situated close to all major highways, malls (Bothasig Mall, Richmond Corner, Platteklouf Village and Canal Walk all equipt with pharmacies either clicks or Medirite), doctors room located in Richwood and variety of primary and high schools (Oakview Academy, Curro Burgundy, Riverside College, Panorama Primary, Monte Vista Primary, Wolraad Woltemade, Bosmansdam high and Primary, Edgemead high and Primary)

The property offers the following:

- Kitchen with ample built in cupboards
- 1 Full Bathroom in the main house
- 3 Bedrooms
- Spacious Lounge
- Braai Room with a built in braai

### Features

<b>Pets Allowed</b>	Yes				
<b>Interior</b>		<b>Exterior</b>		<b>Sizes</b>	
Bedrooms	4	Garages	2	Floor Size	150m <sup>2</sup>
Bathrooms	2	Carports / Parkings	1	Land Size	595m <sup>2</sup>
Kitchens	2	Security	Yes		
Recep. Rooms	3	Pool	Yes		