

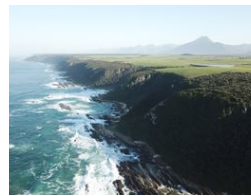
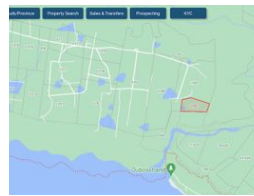


Carin Rolstone
082 254 6144
carin@realgroup.co.za

Contact Blouberg

021 5571428

15 Hof Street, Table View



R10,500,000

 7  4.5  2

Monthly Bond Repayment R108,379.78
Calculated over 20 years at 11% with no deposit.

Transfer Costs R1,041,827.00 **Bond Costs** R89,535.00

These calculations are only a guide. Please ask your conveyancer for exact calculations.

Monthly Rates R2,844

AGRI-TOURISM Opportunity on the Eastern border of the Tsitsikamma National Park

Opportunity on the Eastern border of the Tsitsikamma National Park, which is nestled along South Africa's famous Garden Route and a dream for nature lovers. With its lush forests, dramatic coastline and exciting outdoor activities, this part of our country is not only a true adventure haven, but can also offer a choice of recreational options, such as Guesthouse, Resort, Agri-village and more! Consent Uses available on request.

Located just 5 hours from Cape Town or 2 hours from Port Elizabeth, this can be a lucrative addition to the Garden Route area!

Easy access via the R102 a mere 20km from the Storms River Bridge, and then just another 15km to the farm, with a 900m distance to the ocean.

FEATURING:-

* 7 bedroom home which is versatile, in that it features 2 separate living quarters (1st one built in 1962 & the...

Features

Interior

Bedrooms	7
Bathrooms	4.5
Kitchens	2
Recep. Rooms	2

Exterior

Garages	2
Security	No
Pool	No

Sizes

Land Size	19Ha
-----------	------