

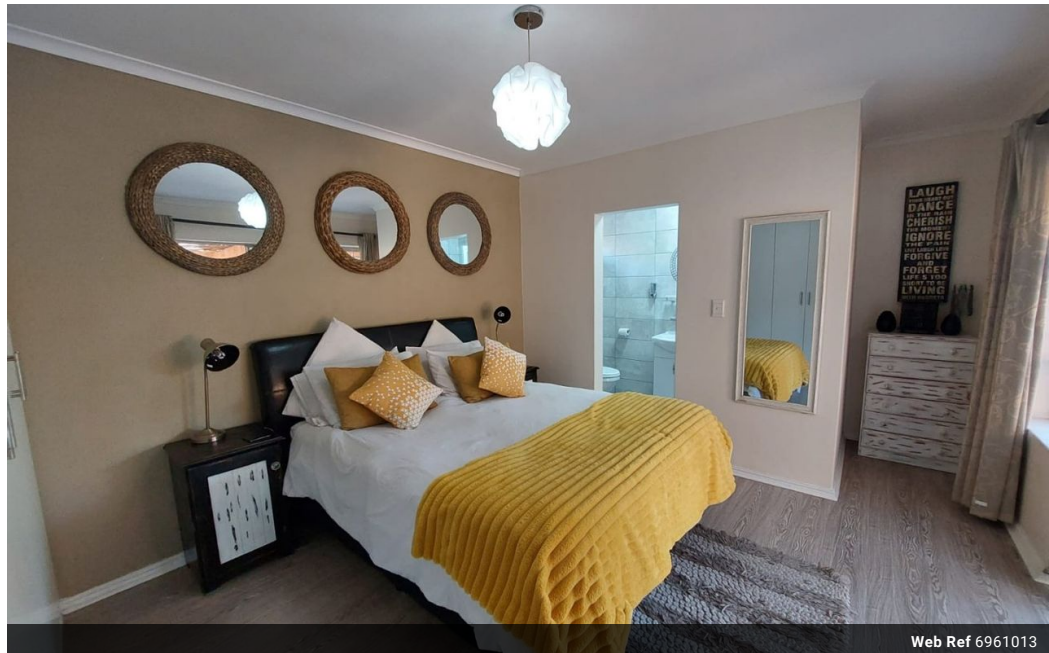


Carin Rolstone
082 254 6144
carin@realgroup.co.za

Contact Blouberg

021 5571428

15 Hof Street, Table View



Web Ref 6961013



R2,695,000

Monthly Bond Repayment R27,817.48
Calculated over 20 years at 11% with no deposit.

Transfer Costs R133,487.00 **Bond Costs** R40,300.00
These calculations are only a guide. Please ask your conveyancer for exact calculations.

Monthly Rates R942

 4  3  2

Family home with flatlet in quiet close

EXCLUSIVE JOINT MANDATE

Please note photographs are from previous sale - Take a walk through with our Virtual Matterport tour & experience the layout of this home

Low maintenance family home in quiet close featuring :-

- * 3 bedrooms, of which the main bedroom has a sliding door opening up onto the covered patio
- * 2 bathrooms
- * Small granny flat (4th bedroom) with kitchenette, en-suite bathroom and own door to the garden
- * Study
- * Open plan lounge/dining/kitchen
- * Modern kitchen with free-standing gas hob/electric oven
- * Braai room opening up onto the patio
- * Approx 50 sqm automated tandem garage
- * Alarm
- * Pre-paid electricity

Features

Pets Allowed Yes

Interior

Bedrooms	4
Bathrooms	3
Kitchens	1
Recep. Rooms	2
Studies	1

Exterior

Garages	2
Carports / Parkings	2
Security	Yes
Pool	No

Sizes

Floor Size	205m ²
Land Size	540m ²