



Azalea Enderli
0824404092
azalea@realgroup.co.za

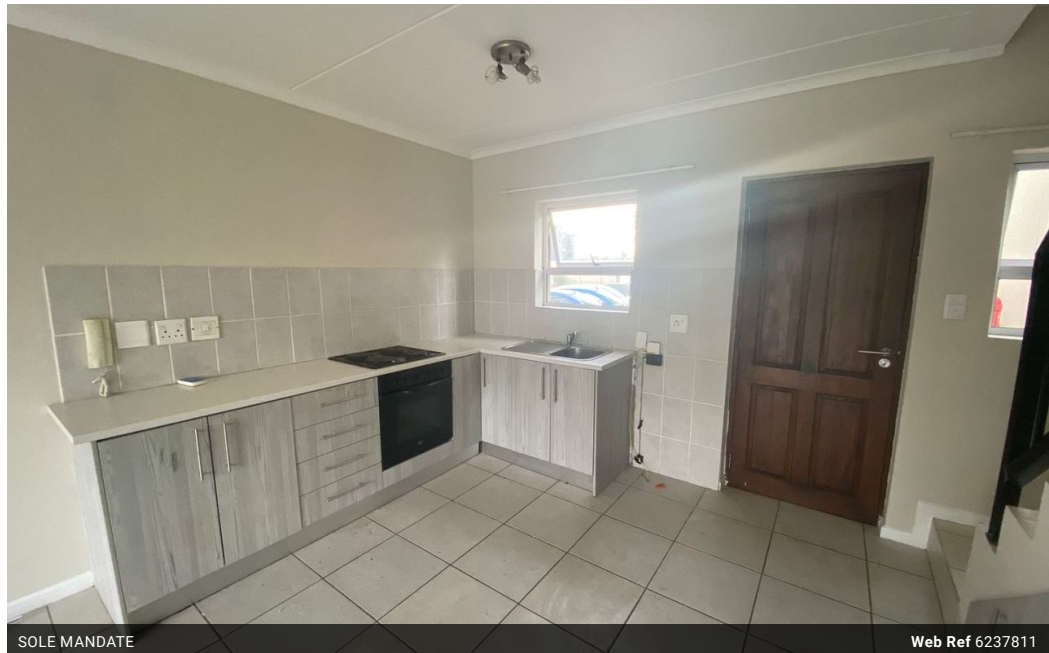


Sean Britt
0836528213
sean@realgroup.co.za

Contact **Blouberg**

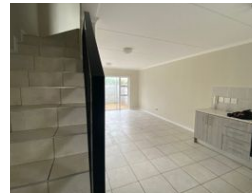
021 5571428

15 Hof Street, Table View



SOLE MANDATE

Web Ref 6237811



R1,299,000

Monthly Bond Repayment R13,408.13
Calculated over 20 years at 11% with no deposit.

Transfer Costs R37,587.00 **Bond Costs** R27,105.00
These calculations are only a guide. Please ask your conveyancer for exact calculations.

 2  3

IF YOU ARE JUST STARTING OUT

This 2 bedroomed 2 bathroomed Duplex is a great place to END UP!

MODERN! LIGHT! BRIGHT!

Sliding doors open onto small PRIVATE garden from the LIVING ROOM. Open plan kitchen with fitted oven and hob with fitted cupboards .
En-suite Shower WC and Basin
Family bathroom with Bath and shower WC and Basin
Allocated parking bay

Features

Interior

Bedrooms 2
Bathrooms 3
Kitchens 1
Recep. Rooms 1

Exterior

Carports / Parkings 1
Security No
Pool No