

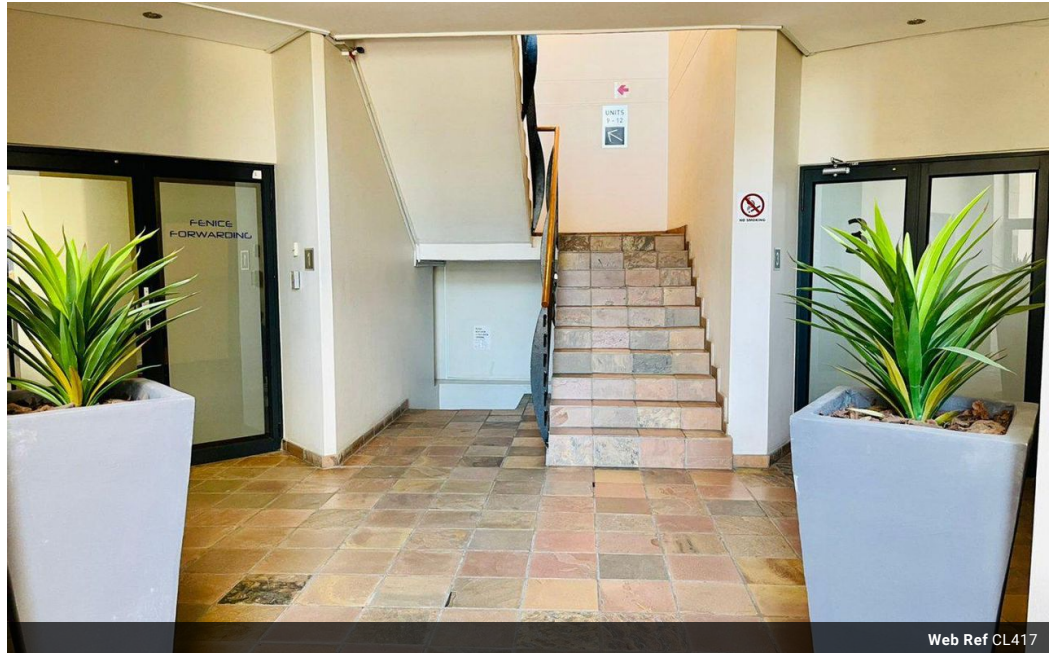


Kaz Van Wyk
0835572843
kaz@realgroup.co.za

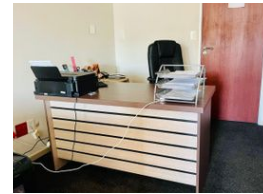
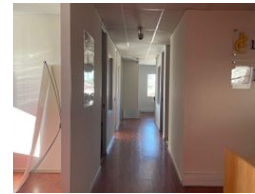
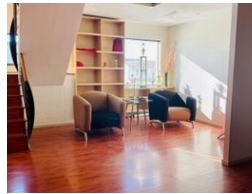
Contact Blouberg

021 5571428

15 Hof Street, Table View



Web Ref CL417



R2,700,000

Monthly Levy R6,035 Excl. VAT

Monthly Rates R2,400 Excl. VAT

 3  0

Large Spacious Office On Sought After Blaauwberg Road

To gain entry into this spacious office unit, the buzzer is used on the ground floor to allow access to the building. On entering the SPACIOUS reception area there is a reception desk and shelving that will remain, across the reception there is a seating area for clients. Down the corridor, there are FOUR spacious offices with a large office at the end which can be either a large office or have multiple work stations. There is also a tiled kitchenette and two separate tiled bathrooms.

Going upstairs there is another three, AIRCONED offices as well as a boardroom / entertainment area with a kitchenette in the corner and large open sliding doors that lead to a tiled veranda with STUNNING VIEWS.

There is secure underground parking with THREE dedicated parking bays as well as a lockable storage unit

Features

Zoning Commercial

Exterior
Basement Parkings 3

Sizes
Floor Size 196m²